

# **Fireman's Brand SPILLCLEAN® & Fireman's Brand Oil B-Dry®** **Work Instructions**

**Removal of Petroleum-Based Spills and Gasolene  
from Cement, Asphalt, Roads, and Highways**

**NET: 5 GALLONS**

**FIREMAN'S**  **BRAND**

**SPILLCLEAN** <sup>®</sup>

**pH Neutral Emulsifier for  
Oil & Gasoline Spill Cleanup**

*Proudly Made  
in the USA*

Fireman's Brand Spillclean is listed on the National Contingency Plan (NCP) Product Schedule. This listing does NOT mean that EPA approves, recommends, licenses, or certifies the use of Fireman's Brand Spillclean on an oil discharge. This listing means only that data have been submitted to EPA as required by Subpart J of the NCP. Only a Federal On-Scene Coordinator (OSC) may authorize use of this product in accordance with Subpart J of the NCP in response to an oil discharge.

|                                                                                                                                                                                                                                                                                                         |                                                                                                                                                                                                                                                                                       |                                                                                                                                                                                                                                                                                                                                                                                                           |
|---------------------------------------------------------------------------------------------------------------------------------------------------------------------------------------------------------------------------------------------------------------------------------------------------------|---------------------------------------------------------------------------------------------------------------------------------------------------------------------------------------------------------------------------------------------------------------------------------------|-----------------------------------------------------------------------------------------------------------------------------------------------------------------------------------------------------------------------------------------------------------------------------------------------------------------------------------------------------------------------------------------------------------|
| <p><b>DIRECTIONS FOR USE:</b></p> <p>Apply <b>SPILLCLEAN</b> to spill/contaminant and thoroughly mix in using broom or brush. When the original color becomes opaque, you will know that the spill has been emulsified. Remove and discard spill according to local, city, and federal regulations.</p> | <p>Store between 33F and 140F<br/>Keep from Freezing</p> <p style="text-align: center;"><b>CAUTION!</b><br/>DO NOT INGEST<br/>KEEP OUT OF EYES<br/>IN CASE OF CONTACT<br/>FLUSH WITH WATER.</p> <p style="text-align: center;"><a href="http://www.ssvinc.com">www.ssvinc.com</a></p> | <p><b>DESCRIPTION:</b></p> <p><b>SPILLCLEAN</b> is a pH7 (neutral) detergent that is safe to use on any surface that is unharmed by water. It solubilizes and emulsifies organic spills such as oil, gasoline, diesel fuel, transmission fluid, grease, brake fluid and antifreeze. It is a viscous solution with a pleasant fragrance. It is biodegradable and harmless to municipal sewage systems.</p> |
|---------------------------------------------------------------------------------------------------------------------------------------------------------------------------------------------------------------------------------------------------------------------------------------------------------|---------------------------------------------------------------------------------------------------------------------------------------------------------------------------------------------------------------------------------------------------------------------------------------|-----------------------------------------------------------------------------------------------------------------------------------------------------------------------------------------------------------------------------------------------------------------------------------------------------------------------------------------------------------------------------------------------------------|

Mfg. By: Super Sat Ventures, Inc. Mequon, WI  
 Manufacture Date: \_\_\_\_\_ Exp. Date: \_\_\_\_\_

Part #: 500100  
Lot #: \_\_\_\_\_

**NET: 20 LBS**

**Instructions:**

Pour **Oil B-Dry**® completely over oil or gas spill. Broom in place to ensure full coverage. Let soak in for at least 10 minutes, then just shovel up and dispose of in receptacle according to city, local, and federal regulations.

Apply **Fireman's Brand Spillclean**® to leftover oil or gas residual embedded in pours of hard surface according to instructions on its label. This will remove the potential of a slippery surface left behind from using **Oil B-Dry**®.

**Description:**


By using **Oil B-Dry**® as directed, you will quickly notice its ability to absorb petroleum and gasolene spills. Best of all, **Oil B-Dry**® offers you superior performance at an economical price. We know you will be satisfied.

**FIREMAN'S**  **BRAND**

**Oil B-Dry** <sup>®</sup>

**Oil & Gasoline Spill Absorbent**


Sprinkle




Mix




Dispose



**Proudly Made in the USA**



[WWW.SSVINC.COM](http://WWW.SSVINC.COM)  
[SALES@SSVINC.COM](mailto:SALES@SSVINC.COM)



500300SSVOBDRY

MFG. BY: SUPER SAT VENTURES, INC., MEQUON, WI  
 WI P/N: 500300SSVOBDRY  
 MFG. DATE: \_\_\_\_\_ EXPIRATION DATE: \_\_\_\_\_

Instructions for use of **Fireman's Brand SPILLCLEAN®** (hereafter **SPILLCLEAN®**)

- **Product Concentrations** = use **SPILLCLEAN®** at full strength (no dilution required)
- **Use Ratios** = one-part **SPILLCLEAN®** to approximately one part spill (exact measurement not required)
- **Types of Application Equipment** = apply directly from container to spill, then use hand-held broom to mix **SPILLCLEAN®** into spill material (oil, petroleum, gasoline)
- **Conditions for Use** = use at temperatures between 33°F and 140°F. Keep from Freezing
- **Product and Oil Containment, Collection, Recovery, and Disposal Procedures** = per local, city, and federal regulations

1. Use a **boom\*** or other containment prior to application of **SPILLCLEAN®** to prevent the spill from spreading or possibly reaching open water.

*\* An oil boom, in the context of oil removal, is a temporary, floating barrier designed to contain, divert, or absorb oil spills on water. These devices act as a first line of defense to stop the spread of oil, protecting shorelines and concentrating the oil into thicker layers, which makes it easier to remove using other equipment like skimmers.*

2. Use a **broom\*\*** or other containment prior to application of **SPILLCLEAN®** to prevent the spill from spreading or possibly reaching open water.

*\*\*A broom can be helpful to push the spill in a direction to better contain and control its location.*

3. Apply **SPILLCLEAN®** directly to virgin oil/ dirty motor oil/ gasoline/petroleum-based spill.

4. Using a broom, thoroughly mix the **SPILLCLEAN®** into the spill. The **SPILLCLEAN®** will surround each of the spill molecules and separate it from the hard surface. Do not mix **SPILLCLEAN®** with any other cleaner or allow other cleaners to contact affected surfaces while **SPILLCLEAN®** is in use.

Note: If the oil spill seeps deep into the pores of the hard surface, repeat steps two through four as many times as necessary to remove the spill completely.

4. Flush the mixture with hose water for an oil-free surface. Dispose of **SPILLCLEAN®**/spill mixture from site according to federal, state, and local regulations.

5. Let the now cleaned surface dry.

|                                                                                    |                                                                                     |                                                                                     |                                                                                      |                                                                                       |
|------------------------------------------------------------------------------------|-------------------------------------------------------------------------------------|-------------------------------------------------------------------------------------|--------------------------------------------------------------------------------------|---------------------------------------------------------------------------------------|
|  |  |  |  |  |
| <b>Step 1</b>                                                                      | <b>Step 2</b>                                                                       | <b>Step 3</b>                                                                       | <b>Step 4</b>                                                                        | <b>Step 5</b>                                                                         |
| Locate and contain oil spill                                                       | Apply <b>Spillclean®</b> liberally to cover spill completely                        | Broom <b>Spillclean®</b> into spill to emulsify                                     | Rinse and dispose in accordance with federal, state, and local regulations           | Let dry                                                                               |

## Instructions for use of **Fireman's Brand OIL B-DRY®**

- 1 Use a **boom\*** or other containment prior to application of **OIL B-DRY®** to prevent the spill from spreading or possibly reaching open water.  
*\* An oil boom, in the context of oil removal, is a **temporary, floating barrier** designed to contain, divert, or absorb oil spills on water. These devices act as a first line of defense to stop the spread of oil, protecting shorelines and concentrating the oil into thicker layers, which makes it easier to remove using other equipment like skimmers.*
- 2 Use a **broom\*\*** or other containment prior to application of **OIL B-DRY®** to prevent the spill from spreading or possibly reaching open water.  
*\*\*A broom can be helpful to push the spill in a direction to better contain and control its location.*
- 3 Apply the dry, granular **OIL B-DRY®** liberally to oil or gasoline spill. The **OIL B-DRY®** will absorb about 90% of the spill.
- 4 Using a shovel or wet vacuum, pick up the **OIL B-DRY®/oil** or gasoline spill, and dispose of accordance with federal, state, and local regulations
- 5 Apply **SPILLCLEAN®** liberally to remaining oil or gasoline spill. Using a broom, mix the **SPILLCLEAN®** well into the spill. The **SPILLCLEAN®** will surround each of the remaining oil or gasoline molecules and separate it from the hard surface. Do not mix **SPILLCLEAN®** with any other cleaner or allow other cleaners to contact affected surfaces while **SPILLCLEAN®** is in use.

Note: If the oil spill seeps deep into the pores of the hard surface, repeat step four as many times as necessary to remove the spill completely.

Dispose of **SPILLCLEAN®/oil** or gasoline mixture from site according to federal, state, and local regulations.

- 6 Let cleaned surface dry.



**STEP 1**

Locate and contain the oil spill



**STEP 2**

Apply **OIL B-DRY®** liberally to the spill and allow it to absorb the bulk of the spill



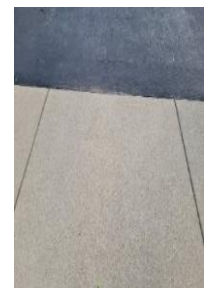
**STEP 3**

Shovel or sweep spill/**OIL B-DRY®** mixture and discard in accordance with federal, state, and local regulations



**STEP 4**

Apply **SPILLCLEAN®** to the remaining spill, broom in place, and rinse with water



**STEP 5**

Let dry

**For additional questions contact Customer Service at 414-840-9223.**